



# Install Guide



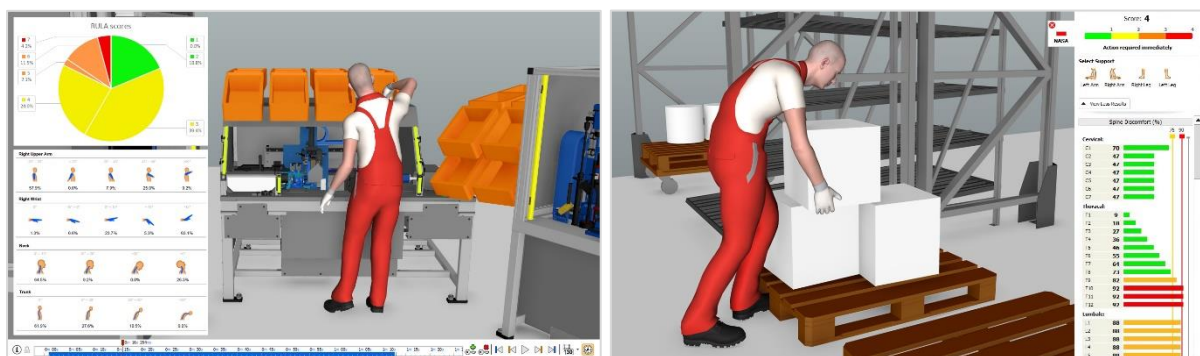
# OVERVIEW

ViveLab Ergo is a complex ergonomic system for virtual testing and verification of product plans or manufacturing processes. With this simulation tool you can model and analyze the effects and the mechanisms of almost any complex system or product in real time.

In ViveLab Ergo system seven types of analyses are implemented for evaluating human motion and posture:

- > RULA
- > OWAS
- > NASA-OBI
- > ISO 11226
- > EN 1005-4
- > Spaghetti diagram (Motion Measurement)
- > Reachability Test

With the easy-to-use software solutions we transfer the human movement into anatomically correct and realistic models. By using ViveLab Ergo you also get access to our large anthropometric databank.



This Install Guide will help you to install the ViveLab Ergo system onto your Windows desktop computer. If you need more help, please read the hints in the software (if you hover with the cursor over any button a detailed description of its function appears) and/or watch the tutorial videos on our official YouTube channel:

[https://www.youtube.com/playlist?list=PLSP\\_48GBsX55fLNvmzq4rVzZVKOvM5gDf](https://www.youtube.com/playlist?list=PLSP_48GBsX55fLNvmzq4rVzZVKOvM5gDf).

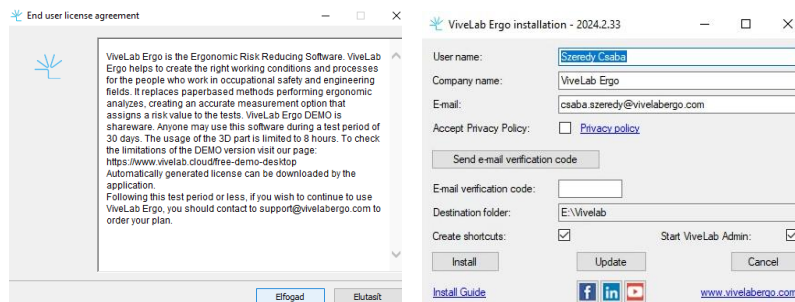
# 1 DESKTOP

## 1.1 Download and install

You may download the ViveLab Ergo desktop version from the company website: [vivelabergo.com](http://vivelabergo.com). The minimum requirements for running ViveLab Ergo are at least Intel Core i7, 16GB RAM and a dedicated graphics card.

Start the installation by double-clicking on the ViveLab icon, accept the license agreement. Then, a new window opens with your registration data: Username, Company name, E-mail address, E-mail verification, and Destination folder. Accept the Privacy Policy by checking the box next to the link and push the “Send e-mail verification code” button to send an e-mail verification code to your mailbox. Check your mailbox for the code (please also check the spam mail folder too!) and put the number into the edit field. Please note that your “User name” must be longer than 5 characters, the Company name must be longer than 2 characters and your e-mail must be a valid e-mail address.

Click 'Install' to install ViveLab Ergo or 'Update' if you have already a working ViveLab Ergo system.



The Install set contains all the required Microsoft prerequisites what are necessary to run ViveLab Ergo. Please install all of them using the default settings. Sometimes you need to restart your computer when one of the prerequisites ask you to do it. After restarting your computer start the downloaded ViveLab Ergo Install program again. You only need to verify your e-mail address if you modify the “E-mail” edit field.

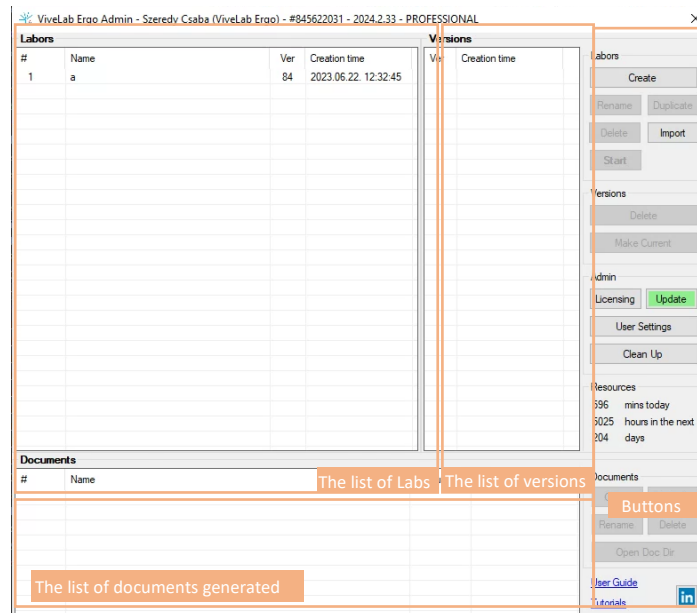
If the installation is successful, the following will appear on the screen:

```
*****  
* Copying files... *  
*****  
*****  
* Preparing setting files... *  
*****  
*****  
* Creating database... *  
*****  
*****  
* Initializing database... *  
*****  
*****  
* ViveLab successfully installed *  
*****  
Press any key to continue . . .
```

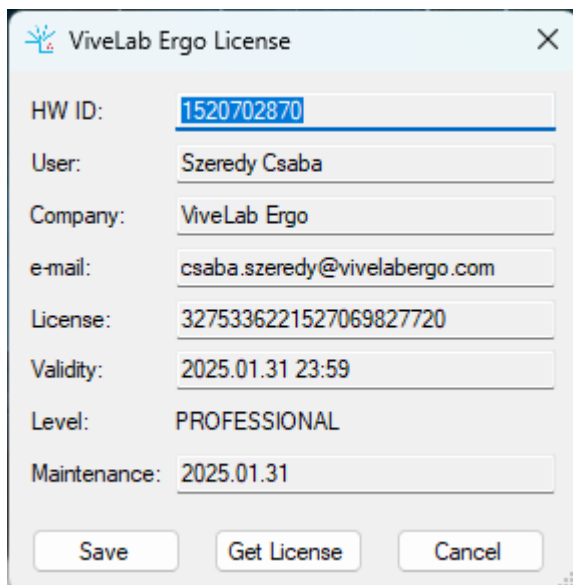
You may start using ViveLab.

## 1.2 Starting ViveLab

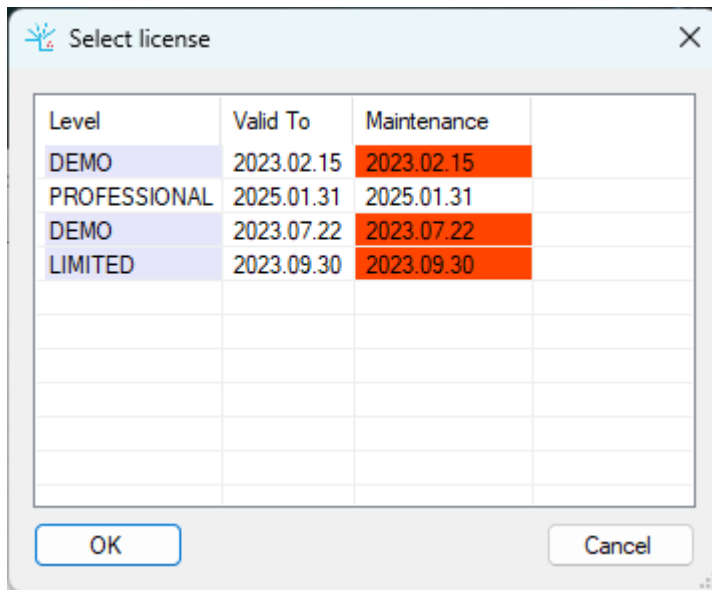
Start the software by clicking on its icon (ViveLab Admin). In the header user information appears. In the main window, there are 3 lists and a block of function buttons. You find a list of your created or imported labs in 'Labors'. When you choose a lab, its versions appear in the 'Versions' area, and the documents created in it appear in the 'Documents' area.



First you need to have a license. For the first users the license is automatically generated by our licensing server. Click the 'Licensing' button where you can see your actual license:

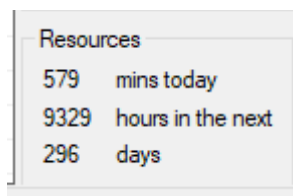


To get your license, click the 'Get License' button, select your valid license and press 'OK':

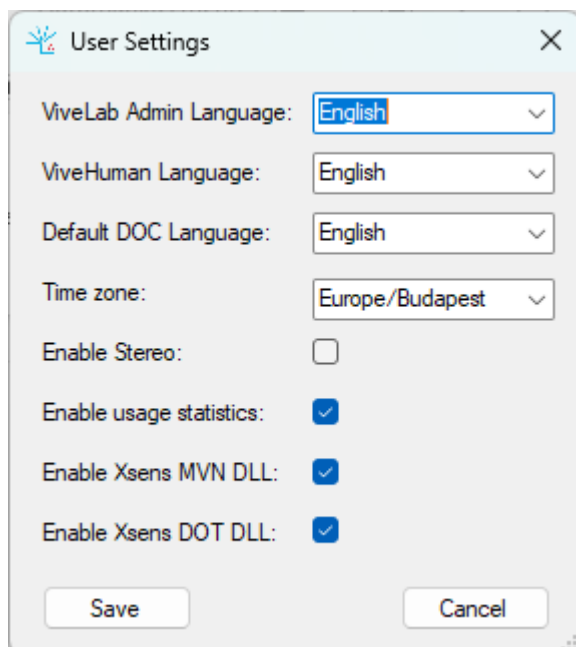


Do not forget to save your selected license by clicking the 'Save' button!

You can see your resources on the main window:



In the 'User Settings' you can set the language and time zone parameters.



If you have a compatible Stereo projection system, you can enable using it.

If you have an installed Xsens MVN system (Animate/Analyze Plus/Pro or XME licens required), to use this functionality you need to enable Xsens MVN DLL. Do not enable this function if you don't have the required license because in this case the missing license slows down the application.

To use Xsens DOT sensors please enable Xsens DOT DLL.

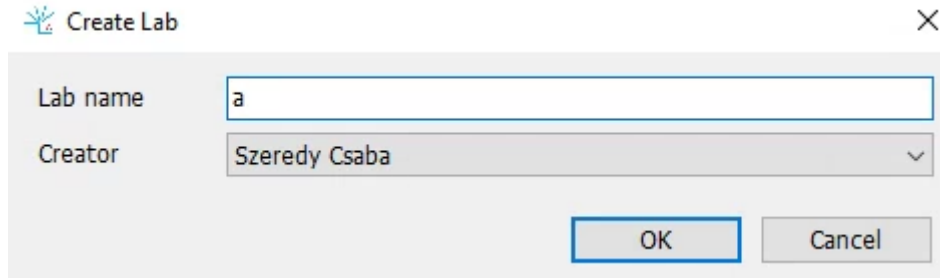
Please note Xsens subsystem can only be used in newer computers which are compatible with the Xsens requirements.

See the Xsens knowledge base: <https://base.movella.com/s/article/Windows-error-when-opening-MVN>

In the Admin section you can initiate an Update to your system and execute a Clean Up if you notice an abnormality in the operation of the ViveLab Ergo system or an error message warns you of this.

## 1.3 Starting ViveLab

Create a Lab by 'Create Lab' button, name it and click 'OK'. The lab (in the example 'a') will appear in the 'Labors' block. If you would like to change the name 'Rename' it, or if you need more of the same lab 'Duplicate' it.



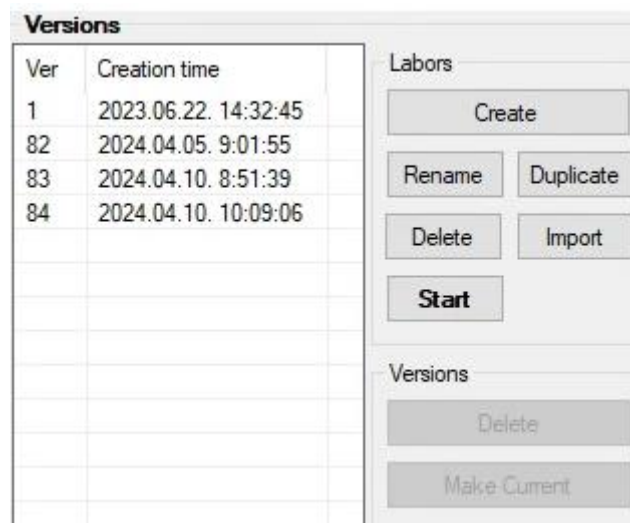
Lab name: a

Creator: Szeregy Csaba

Buttons: OK, Cancel

In case you don't need it anymore 'Delete' it. For saving a lab outside of ViveLab you can copy the complete folder of ViveLab\Fileshare\Vlabs\Vlab##### where ##### represents the number of your lab in the Labs lists. Use the 'Import Lab' button to import a lab saved from an other PC.

When a version is highlighted you may 'Delete Version(s)' from the list or make a chosen version current with the 'Make Version Current' option. You can not delete the first and the last versions.

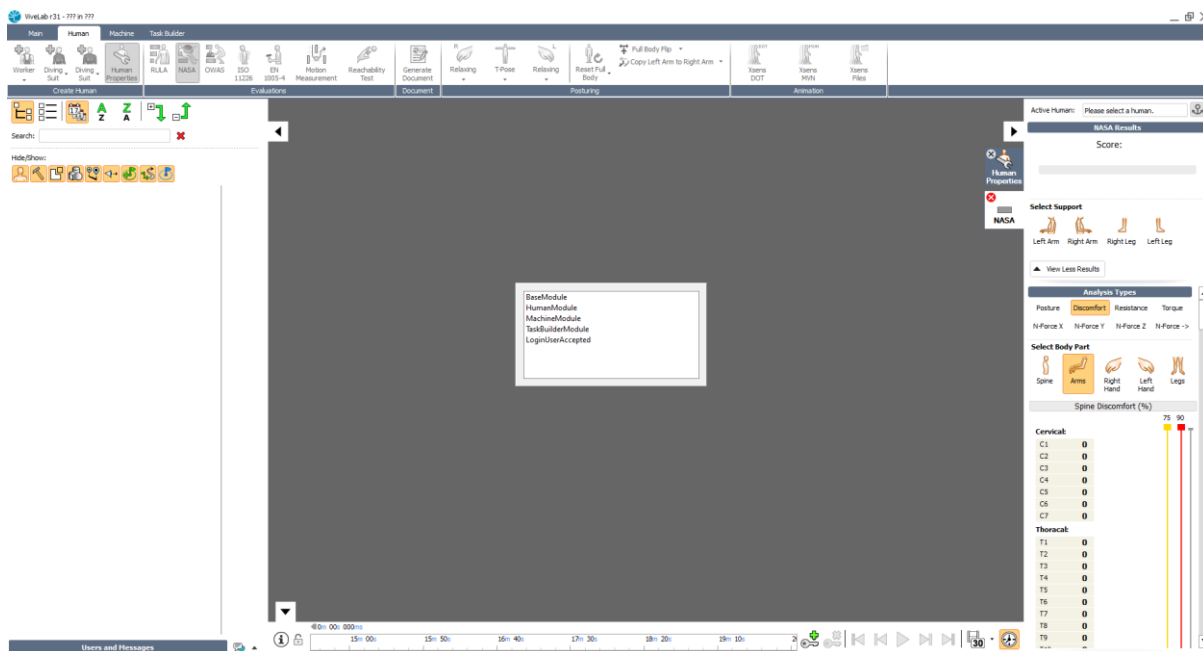


Ver	Creation time
1	2023.06.22. 14:32:45
82	2024.04.05. 9:01:55
83	2024.04.10. 8:51:39
84	2024.04.10. 10:09:06

Buttons: Create, Rename, Duplicate, Delete, Import, Start, Delete, Make Current

You can change the orders in any list by clicking the list header column.

You can start a Virtual Labor by clicking the 'Start' button or double clicking a Lab in the Labors list.



It's important to know:

- You can only open one lab at a time on your computer.
- If you would like to open another one, first you will have to close the current one.
- The created scene is saved automatically, the saved versions can be seen in 'Versions'.
- There is no UNDO/REDO in the system, but you can always back to an earlier Version.

**All licenses are bound to the computer, not the person.** You may buy monthly, yearly or perpetual licenses with the same functionality. We provide special opportunities for universities.

If you have any problems or need help, please contact our support at [support@vivelabergo.com](mailto:support@vivelabergo.com).

Please contact our sales team, if you would like to know more about our packages or buy license: [sales@vivelabergo.com](mailto:sales@vivelabergo.com).





PEOPLE CENTRIC TECHNOLOGY



ERGO